



## *“QwikVue Suite” Installation – v1.7* *For AutoEDMS v6.5 r2sr5 (SR5) and Later*

Version: 1.0.9 – June 26, 2018– RLB

### Overview

This document provides instructions on how to obtain, install and configure the “QwikVue Suite” of viewing technology solutions by Logical Systems, LLC, for use in an AutoEDMS v6.5 system. The QwikVue Suite includes the following components:

- **QwikVue** – a new viewing/printing application developed by Logical Systems, which is based on “Open Design Alliance” technology, and will support all versions of AutoCAD drawing files (DWG) up to and including the 2016 format, as well as Microstation DGN drawing files.
- **AiMakerQV** – the QwikVue version of AutoImage technology which creates thumbnails of managed files for display on AutoEDMS Forms, and which will support all versions of AutoCAD drawing files (DWG) up to and including the 2016 format, as well as Microstation DGN drawing files.
- **TDAAPI** – this is the “Technical Data Access” feature of AutoEDMS, updated for AutoCAD 2016 drawing (DWG) files, which provides the Attribute Reader functions to allow automated population of AutoEDMS database records with information contained in your AutoCAD drawings. Not all AutoEDMS customer sites use this feature, but those who do will benefit from the amazing time & cost savings it offers.

---

**Note:** QwikVue does not yet include redline/markup capability, although we have plans to add this feature in an upcoming release. For now, redline/markup will continue to be provided by the older AVDE viewer in AutoEDMS. If you are currently using the “Redline Module”, the QwikVue installation and configuration will not in any way interfere with that feature.

---

### Installation & Configuration

#### **Considerations:**

- (a) **Please Note:** These instructions are specifically intended for AutoEDMS customer sites who have not yet installed the QwikVue Suite in their AutoEDMS system. If you’re not sure and need assistance, please contact Logical Systems by visiting our website at [www.logicalsistemasrb.com](http://www.logicalsistemasrb.com) and using the **Contact** page to send us a message.
- (b) Installation of the QwikVue Suite will require “administrator” rights and permissions to the AutoEDMS system folders, as well as an understanding of how to do viewer configuration with the AutoEDMS “Viewer Manager”.
- (c) It should not be necessary to have users exit from AutoEDMS to perform this installation.

( continued on next page... )

## Installation Steps:

**Please Note:** If you have previously installed the “SR6” update on your AutoEDMS system, you don’t need to perform the three (3) Installation Steps in this section – proceed to the next section, “Configuration of QwikVue”.

1. Download this Zip file, which contains all of the QwikVue Suite applications...

[https://www.autoedms.net/Clients/QV/QwikVue\\_v1.7-all.zip](https://www.autoedms.net/Clients/QV/QwikVue_v1.7-all.zip)

2. Extract the entire contents of the **QwikVue\_v1.7-all.zip** file into the **\AEW65\BIN\** folder on your server or computer where AutoEDMS is installed. This will put a new version of “AiMaker.exe” into the **Bin** folder, and it will create a new **QwikVue** folder in that same location.
3. Look for the **Utilities** folder under **\AEW65\BIN\QwikVue\**, and from it please copy the **StnSetup.ACL** file to the **\AEW65\ACL\** folder to overwrite the older version of that file.

This concludes the “installation” of the QwikVue Suite applications – proceed to the next section.

## Configuration of QwikVue

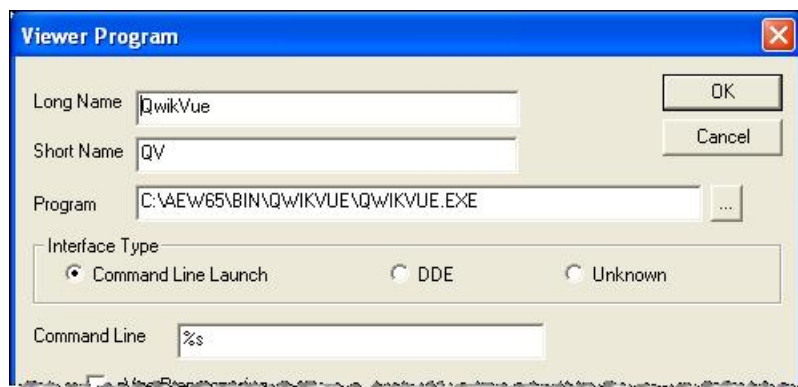
Your existing AutoEDMS system may currently be configured to use the older “AutoEDMS aVue Desktop Edition” viewer (AVDE) for all file types, or it may be configured to use some other viewer for DWG and DGN files. So in this section, you’ll configure AutoEDMS to use QwikVue for DWG and DGN files... the AVDE viewer can still be used for all other file types.

---

**Note:** The instructions below configure AutoEDMS to use QwikVue for ALL users. But if you want to test QwikVue and familiarize yourself with it before unleashing it on all users, and you need help on creating viewer configurations for individual workstations, let us know & we’ll provide you with the necessary information.

---

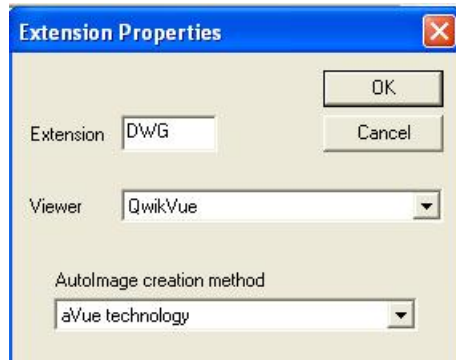
1. From the AE InfoCenter, under Configuration Tools > Setup, run the “Viewer Manager”.
2. Pick [Next >] twice in the wizard to reach the “Viewer Program Setup” page..
3. Pick [Add], then make entries to coincide with those you see in the screenshot below. **Note** that you’ll have your own drive letter or UNC path to the QwikVue.EXE – you can use the [...] button and browse to the location of the QwikVue program under **\AEW65\BIN\QwikVue\** on your server.



4. Pick [OK] when all the information is entered – you should then see “QwikVue” in your list of configured viewers.
5. Pick [Next >] to reach the “Viewer Extension Associations” page.

( continued on next page... )

6. If you already have an Extension configuration item for the DWG extension, you can select it and pick [Edit...] to switch it to using the **QwikVue** viewer. But if you don't have a configuration item for the DWG extension, pick [Add...] and make the entries as shown below.



7. If you also want to use QwikVue for viewing Microstation DGN files, repeat step 6 to create an Extension configuration item for **DGN**, similar to the one you created for DWG.
8. Pick [Next >] to reach the “Save Viewer Profile” page and pick [Finish] – this will save your changes to the GLOBAL.VIN file, which is the global viewer configuration for ALL AutoEDMS users at your site.
9. The next time users restart AutoEDMS, they will have QwikVue assigned to be used for viewing DWG (and/or DGN) files.
10. **Important:** You (as the administrator) should do an initial launch of QwikVue from AutoEDMS by viewing a record associated with a DWG file. This “first launch” will activate the 30-day trial and make it possible to license QwikVue later – see the “**Licensing QwikVue**” section later in this document for further details.
11. This concludes the configuration of QwikVue in Viewer Manager for use by AutoEDMS.

## Configuration of TdaApiQV for Attribute Extraction

If your existing AutoEDMS system includes an option for “attribute extraction” or “attribute reading” from AutoCAD DWG files, then you should reconfigure it to use our latest QwikVue technology, as per the following instruction steps.

---

**Note:** If your AutoEDMS system does not include an option for “attribute extraction”, and you’d like more information about that feature, please send an email to [robinb@logicalsystemsrb.com](mailto:robinb@logicalsystemsrb.com).

---

1. Locate the AENETWRK.INI file which should be in the **AEW65** folder on your server/computer where AutoEDMS software is installed.
2. Open the AENETWRK.INI in a text editor, such as Notepad.
3. Locate the “[Paths]” heading in the file, and within that section, you should find a line beginning with “TDAAPI=” (not including the quotes).
4. Edit the “TDAAPI=” line to read as follows...

```
TDAAPI=_SysRoot:Bin\QwikVue\TDAAPIMi.DLL
```

**Note:** Be sure to spell "QwikVue" correctly as shown above.

5. Exit the text editor and Save your changes to the AENETWRK.INI file.

---

**Note:** If you had previously been having trouble extracting attribute data from your AutoCAD drawings created with AutoCAD version 2010 or later, this update should resolve those issues.

---

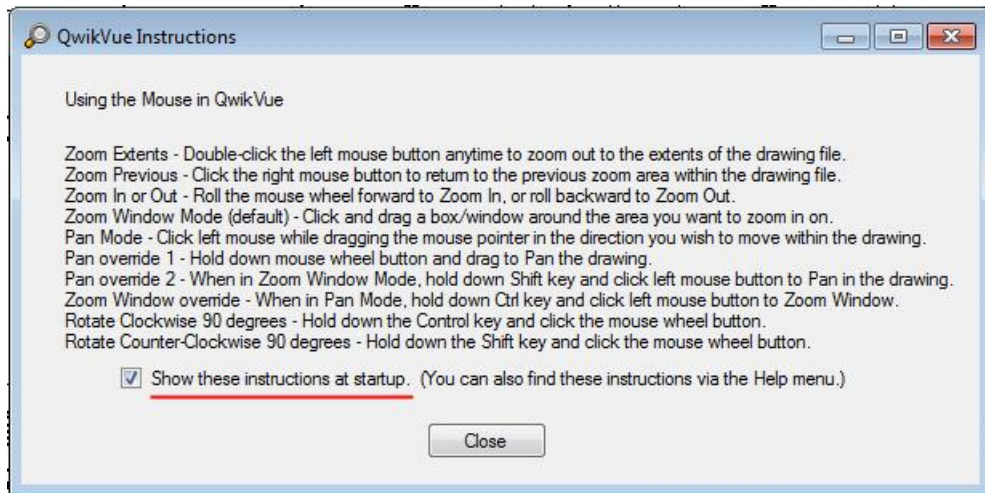
## Workstation Setup for QwikVue

Some workstation computers running Windows XP and Windows 7 may throw errors when trying to launch QwikVue if they don't have the necessary Microsoft supplemental programs installed. To resolve those errors, **the first thing you should do** is re-run the AutoEDMS "Workstation Setup" process (StnSetup.exe) up to the point where you get the "Welcome" message, which will attempt to install the necessary Microsoft programs. When you reach the "Welcome" message, you can exit Station Setup.


If you have any problems with re-running Workstation Setup, or if you're still getting errors on a computer after running Workstation Setup on it, please contact Logical Systems for assistance.

## Instructions for Using QwikVue

QwikVue has been designed for simplified CAD viewing by non-CAD users, and can be operated primarily via mouse controls. When you first launch QwikVue from AutoEDMS by clicking on the autoimage area (thumbnail view) of a DWG or DGN drawing file, you'll see the following instructions screen...

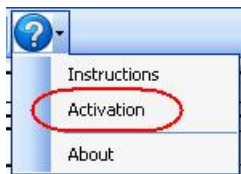


This screen will appear each time you launch QwikVue unless you un-check the option to "Show these instructions at startup."

If you turn this feature off, but want to turn it back on later, select the Help button  on the QwikVue toolbar, then pick "Instructions" which displays the dialog shown above.

## Licensing QwikVue

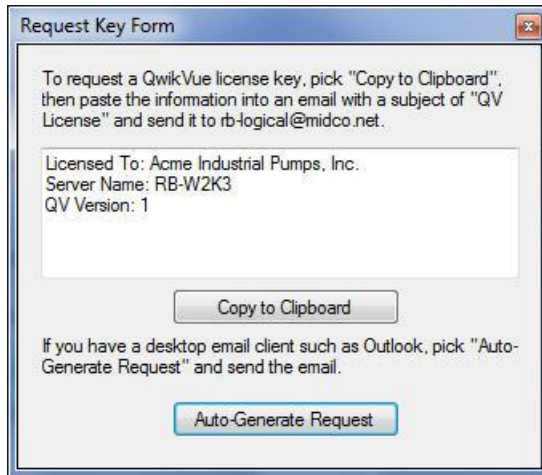
1. Load up AutoEDMS, find a record for a DWG file, then launch QwikVue by clicking on the autoimage box.
2. Next, in QwikVue select the Help (?) button, and choose the "Activation" option as circled in the screenshot below.



3. In the QwikVue Activation dialog, fill in your company and/or site name in the "Licensed To" box.

( continued on next page... )

- Pick the [Request] button, which offers 2 options for requesting the license key, as shown in the example screenshot below. The “Auto-Generate Request” option is the easiest to use if you have a desktop email client such as Outlook.



- In the Activation dialog, you can pick [Cancel], which will close the dialog but it will remember your company / site name info... so you'll be ready for when you receive the License Key information.
- When a Logical Systems representative sends you the License Key, you can once again load up QwikVue, go into the “Activation” dialog, then copy and paste each set of 5 letters/numbers into the boxes... and pick [Authorize].
- You should get the following message:



- If you get any other message, please contact Logical Systems for assistance.
- After you pick [OK] on this last message, QwikVue is licensed.

{ End of “QwikVue Suite Installation” document }