



QwikVue Users Guide

For AutoEDMS v6.5 r2sr5 (SR5) and Later

Version: 1.0.2 – January 8, 2015 – RLB

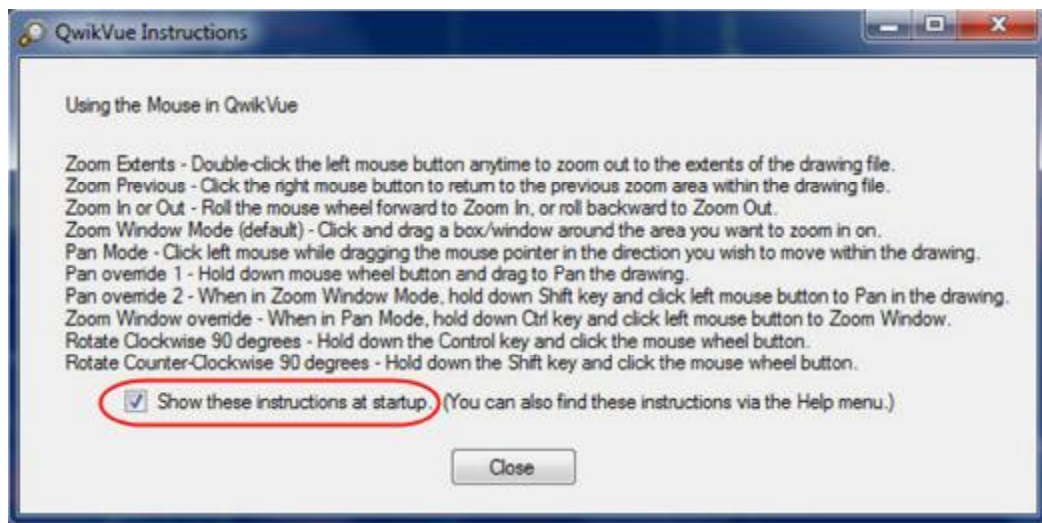
Overview

QwikVue was designed for ease-of-use, with most navigation functions performed by use the mouse. As of version 1.5, QwikVue supports viewing of AutoCAD drawing (DWG) files up to the 2015 release, and Microstation drawing (DGN) files up to the v8i release.

Default Settings at Startup

When you launch QwikVue for the first time, by default...

1. The QwikVue “Mouse Instructions” are displayed, as shown in the photo below.



You can turn off the automatic display of Mouse Instructions at startup by un-checking the “Show these instructions at startup.” checkbox as circled above.

2. QwikVue will be activated in “Evaluation Mode” which offers 30 days of usage before it must be “Activated” with a license key – for more info, refer to the “**License Activation**” topic below
3. QwikVue will operate in “Zoom Window mode”, meaning that the default action of the Mouse click-and-drag will be to Zoom up on a rectangular window area in the drawing. You can change this to “Pan mode” by using a button on the toolbar – see the “**Toolbar Functions**” topic below.

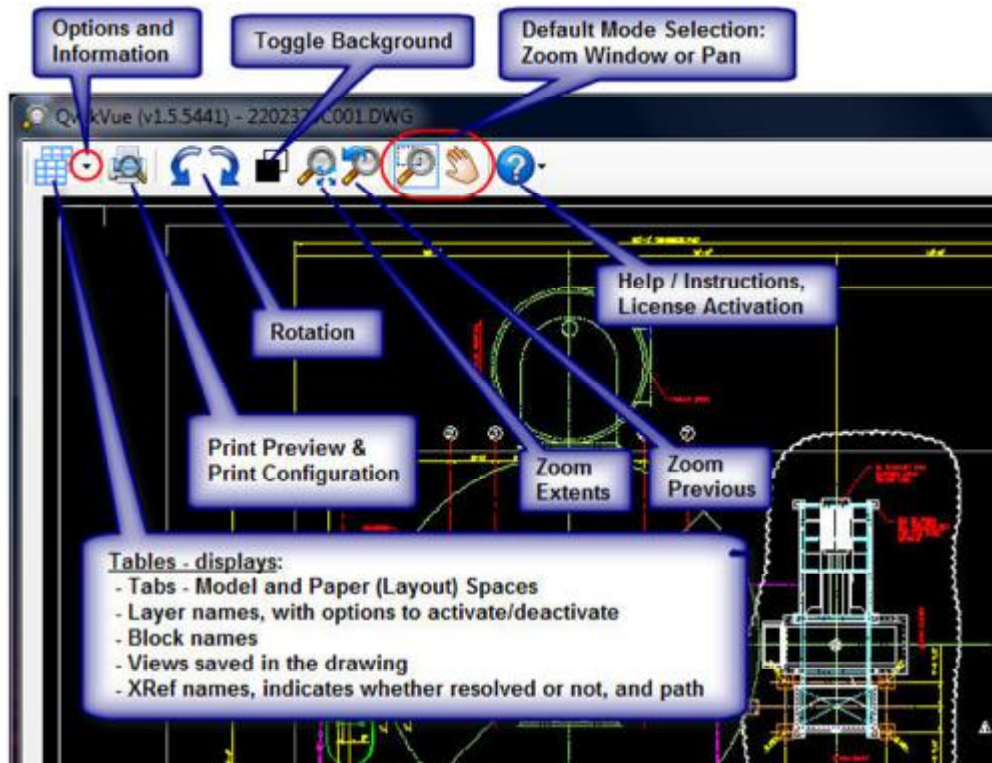
Primary Mouse Functions

The primary navigation functions available using the Mouse, i.e., functions you'll use frequently:

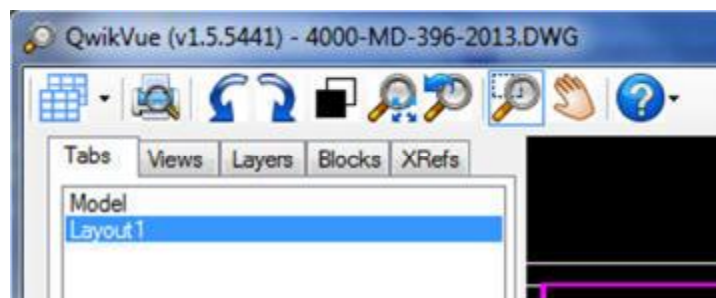
1. Zoom Window – click and drag a box/window around an area you want to zoom in on.
2. Zoom Previous – click your right mouse button.
3. Zoom Extents – double-click the left mouse button.
4. Zoom In or Out – roll the mouse wheel forward (Zoom In) or backward (Zoom Out)
5. Pan – click and hold down the mouse wheel, then move the mouse.

Toolbar Functions

Functions on the QwikVue toolbar are shown in the photo below.



1. The “Tables” button will display a panel on the left-hand side of the QwikVue window to show various items contained in a drawing file, as illustrated in the photo below.



- The “**Options and Information**” button is a drop-down menu that includes choices for Tables, Options, and Information. If you select “Options”, you’ll see the following choices:

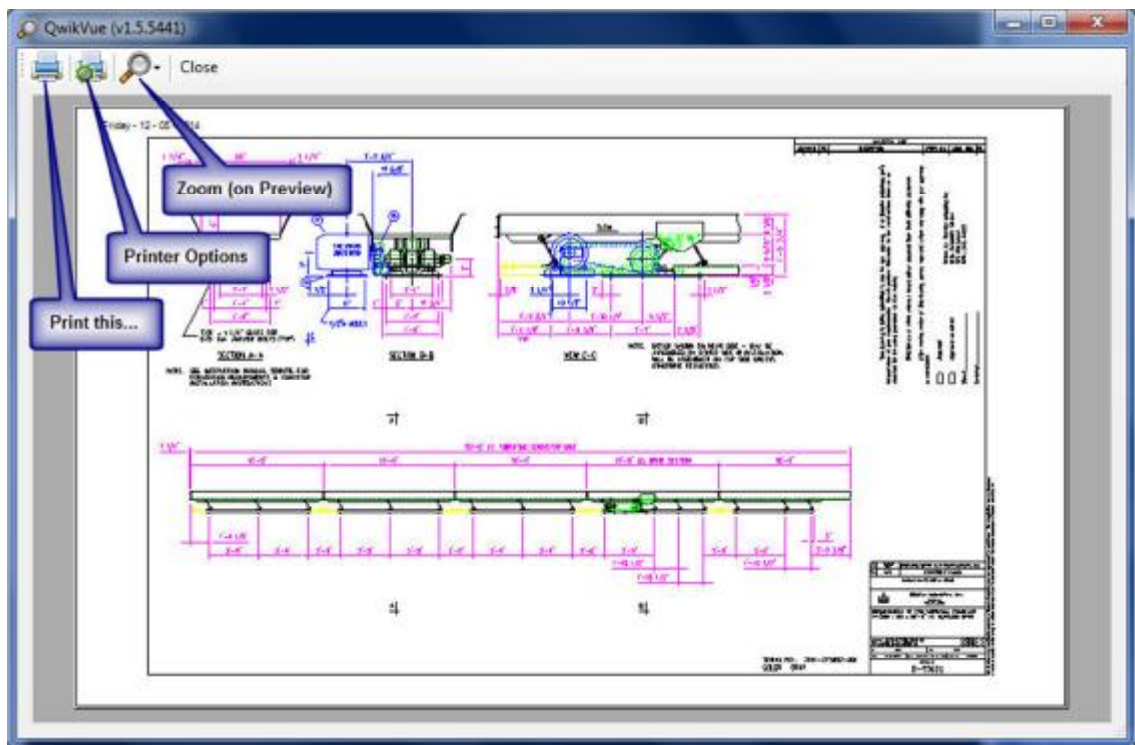


For more information about the options on the General tab, see “**Options - General**” section below.


On the Options screen, the “Fonts” and “XRefs” pages can be used to tell QwikVue where to look for the Font files and XRef files that your company considers to be ‘standards’ as in the case of Fonts, or ‘libraries’ in the case of XRefs. For more information, see the “**Options – Fonts and XRef**” section below.

If you select “Information”, you’ll see basic reference information about the drawing file.

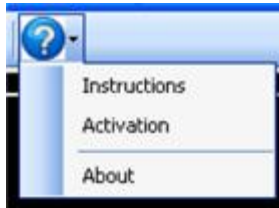
- The “**Print Preview**” button brings up the basic printing interface, where initially you’ll see what the current drawing should look like when printed, similar to the photo shown below.



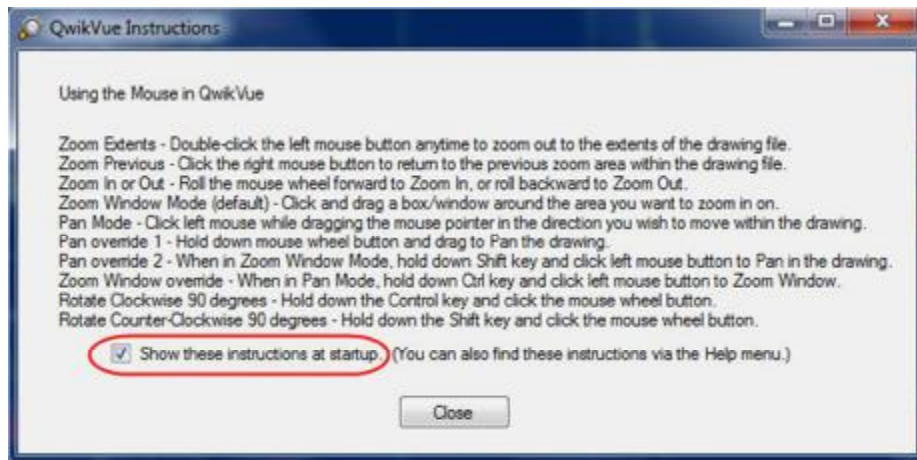
Choose the “Printer Options” toolbar button to select a printer, change print settings and options, etc. When you’re satisfied with your choices and the appearance of the preview, select the “Print this...” button. For more information, see the “**Printer Options**” section below.

- The “**Rotation**” buttons  allow you to rotate display of your drawing either counter-clockwise or clockwise, in 45 degree increments.
- The “**Toggle Background**” button toggles the background color from black to white and vice versa.

6. The **“Zoom Extents”** button will display the complete drawing file, as defined by the “extents” set within the drawing. This is the same function as you get when double-clicking on the left mouse button.
7. The **“Zoom Previous”** button will display the previous zoom view of the drawing file. This is the same function as you get when clicking on the right mouse button.
8. The **“Zoom Window Mode”** button sets the default action of the mouse to do a Zoom Window operation.
9. The **“Pan Mode”** button sets the default action of the mouse to do a Pan operation.
10. The **“Help”** button will display a menu as shown in the photo below.



Picking the “Instructions” option will display the Mouse Instructions dialog as shown below:



The “Activation” option is displayed if QwikVue is running in “Evaluation Mode”, and it brings up the dialog that allows you to license your copy of QwikVue. For more information, see the **“License Activation”** topic below.

The “About” option displays information about the QwikVue viewer application, including version.

Options – General

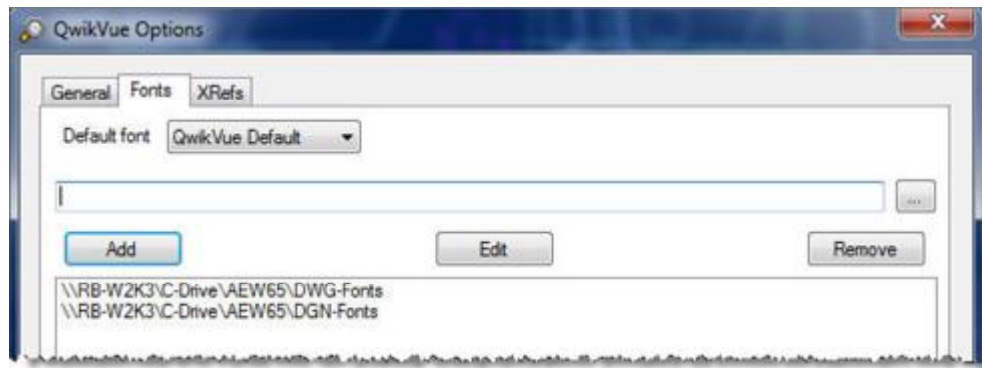
CAD Viewing choices on the “General” page under “Options” are shown below, and these are saved on a per-user to a “QwikVue.INI” file on each user’s workstation computer.



1. **Reset Print Preview Window** – The QwikVue “Print Preview” window location and size is saved as per adjustments made by the user. Picking this choice will return the Print Preview window back to its default location and size on the primary display screen. This option might be used in situations where the Print Preview may possibly have “disappeared” due to adjustments made by the user, either intentional or accidental.
2. **Use Resources in QwikVue\Resources folder** – When selected, this option will cause QwikVue to utilize font files and other types of resources, such as linetype files, which are stored in the “Resources” folder under _SysRoot:Bin\QwikVue\... where “_SysRoot:” indicates the AutoEDMS installation folder. This option allows QwikVue to properly display text and lines as they were originally intended in AutoCAD or Microstation drawings. **Note:** This option is selected by default.
3. **Show Lineweights** – When selected, QwikVue will display lineweights if a DWG or DGN file has been saved with the lineweights displayed.
4. **Force to Black/White** – When selected, QwikVue will display a drawing file with all white entities or all black entities, depending on the current background color selected.

Options – Fonts and XRefs

The “Fonts” and “XRefs” pages under Options allow the user to define folder locations where QwikVue should look for resources so it can properly display drawing files. These options are especially valuable if your company has specific (or multiple) folders where standard font files and/or XRef files are stored.



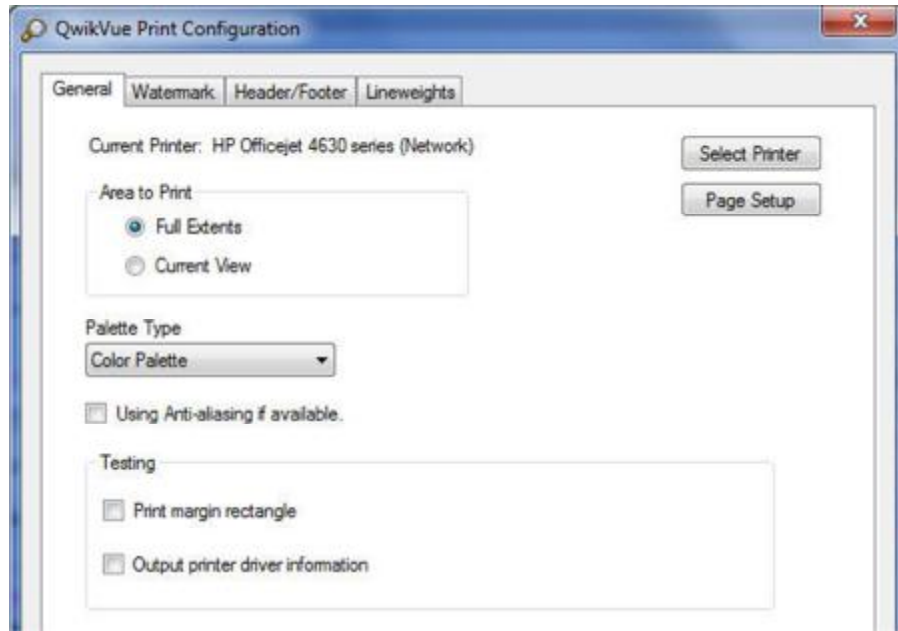
Both pages, Fonts and XRefs, use the same method to define reference folder locations:

1. Pick the browse button [...], and browse to the folder you want to select where Font or XRef resources are stored.
2. Next, pick the [Add] button, which will add your folder selection to the list of resource folders.
3. You can [Edit] or [Remove] the resource folders by first selecting the saved path, then selecting those buttons.

Printer Options

Selecting the “Print Preview” option brings up the basic printing interface, where initially you’ll see what the current drawing should look like when printed.

If you select the “Printer Options” button  on the toolbar, you’ll see the following configuration dialog:



The Print Configuration option screens are as follows:

General:

On the General dialog, the choices are:

Select Printer – brings up the “Select Printer” dialog for choosing a printer, print range (All for drawings), print to file, and number of copies.

Page Setup – brings up the “Page Setup” dialog for choosing paper size, orientation (portrait or landscape) and margins.

Area to Print – select “Full Extents” or “Current View”.

Palette Type – choose from “Color Palette” or “Force all colors to black”

There are also two Testing options for troubleshooting purposes.

{ End of “QwikVue User Guide” document }